

EHSMB Handbook Review 2023



**ERIE HIGH SCHOOL
MARCHING BAND**
ERIE, PA



A Message from your Team...

Dear Erie High School Marching Band Parents and Students,

Welcome to the Erie High School Marching Band! This great organization hails over a decade of excellence in performance and competition.

We are very happy you have made the choice to become a member of the Erie High School Marching Band family!

This handbook is intended to give all readers an idea of what it is like to be part of the Erie High School Marching Band (EHSMB). In this handbook, you will find information about what to expect, what to look forward to and what you **must** do to be a successful and contributing member. **By joining the band you are agreeing to everything written in this handbook.*

Once again, welcome to the Erie High School Marching Band. Please take time to read this handbook carefully and return the appropriate forms by the assigned date so we can start a wonderful year!

Musically Yours,

Erick Nicklas, Director

Staff, Erie High School Marching Band

Attendance Policy

Here are some guidelines to help you clearly understand our attendance policy. If you have questions, please contact the director or assistant director of the band.



1. Rehearsal attendance is **mandatory**.
2. Excused absences include illness (must be absent from school) and religious events (weddings, funerals, bar mitzvahs, confirmations).
 - ****Unexcused absences include outside jobs, transportation issues, and social gatherings. If you need a ride, consult with a fellow band member or staff.**
3. Students should fill out an [Absence form](#) also available on the [Forms Page](#) a minimum of **2 weeks prior** to the absence. Please let us know via email or phone (contact information on cover) of any and all absences
4. A student who misses any two rehearsals in a given week during the performance season prohibits his/her/their participation with the ensemble during a performance. This will be left to the discretion of the director/staff. Attendance, however, is still mandatory for these performances. Students will be required to stand during the duration of the performance.
5. If a student arrives to rehearsal more than thirty (30) minutes past the beginning of rehearsal, he/she/they are considered tardy. Three (3) tardies constitutes an (1) absence. *30 minutes allows for travel between different schools and home.
6. There is, of course, always extenuating circumstances that may prohibit a member from being at multiple rehearsals. These rare occurrences should be discussed with staff as soon as the member is aware of the situation.

Excuse Format! :)

Here is an example of appropriate excuses:

“Please excuse Billy from rehearsal on 1/1/2000 due to an appointment.
Thank you,
Billy’s mom”

“Madison has permission to leave during lunch on Tuesday 8/8/2000 with Joe’s mother Diane to get food and then return.
Thank you.
Madison’s father”



ClassDojo: Online/App, parent-staff communication.
Please see band staff for more information.

Any questions regarding attendance should be directed to the band director(s):
(814) 580-6680 [voice/text] or emailing
info@eacmb.org

Any questions regarding fundraising, parental support, etc.: boosters@eacmb.org

We are online 24 hours per day at
www.erieroyalsmb.org

EHS Marching Band is also available on all Social media platforms!

Academic Accountability

As a student of Erie's Schools and a member and representative of the Erie High School Marching Band, members are expected to maintain a passing average in all classes.

Students will be required to submit proof of passing average once every 8 weeks, in the middle of each quarter. This will be submitted via the "Proof of Passing" paperwork, or a screenshot of all passing grades. If the student does not display passing average, the student will be asked to complete one of the following:

1. Complete special help time with teachers, with signed proof that all missing assignments are submitted and passing grade is acquired.
2. Students will come to practice, as usual, and will be asked to bring the assignments for the failing classes. Students will then spend an assigned amount of time completing assignments.

Until the student submits proof of passing average, students may lose the ability to perform or travel.



Use of School-Owned Instruments and “Stuff”

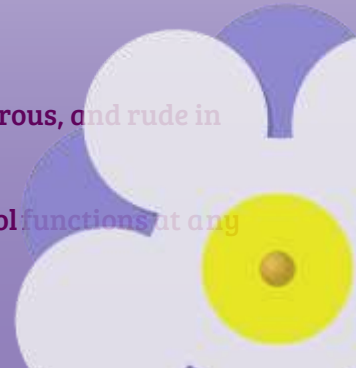
Erie’s Public Schools has provided high quality instruments for each member to use for the marching band. Members will be assigned instruments for usage with the marching band. Repairs will be financially backed by the EHSMB, however, any abuse or theft of school issued property will be the responsibility of the member and the members’ family.

**Members of the marching band should be cognizant of the importance of instrument care!
We are fortunate to have such high-quality instruments.**



Be Good! (Citizen)

1. Positivity
2. Students are expected to exhibit behaviors that are conducive to optimum TEAM achievement. These behaviors can include, but are not limited to:
 - a. performing to the best of your ability at all times,
 - b. supporting other members and their efforts,
 - c. showing respect for the goals of the organization.
3. Students will be expected to exhibit behaviors of self-discipline during rehearsals. These behaviors can include, but are not limited to:
 - a. not talking during rehearsals,
 - b. not disturbing instruction in any fashion,
 - c. respecting students, self, faculty, staff or parent volunteers,
 - d. maintaining the interest and focus toward the goals of the organization.
4. Students will be expected to exhibit courteous behavior at all times. Please refrain from being loud, boisterous, and rude in your communication with or around others.
5. Public Displays of Affection (PDA) are inappropriate in the band facilities, on buses, or official band/school functions at any time.



Be Good! (Citizen)

1. If you can't say it in a G-rated movie, you shouldn't say it while representing the band in ANY manner (i.e. rehearsal, performance, in uniform, in band shirts, social media, etc.) Please be mature enough and respectful enough to consider your surroundings and your audience when you are alone or with others. It has taken years to build a good reputation, but it can be torn down in just minutes!
2. Due to the physical performance nature of marching band, students should make HEALTHY food and beverage choices while participating in and between rehearsal and performance activities. For example, WATER, sports drinks (Gatorade, Propel) are permitted; *pop, soft drinks, energy drinks, etc. are prohibited!* If you learn of a new drink that you think may qualify for use at rehearsal, please ask a staff member.
3. Dress Code: No 3 B's (no belly's, no bottoms, no busts), i.e. no spaghetti straps, etc. You will be asked to either cover up or go home to change.
4. Harassment, hazing, bullying, or abuse of students, staff, or parents will not be tolerated. An infraction of this nature may subject that student to dismissal from the band.
5. All rules and guidelines of the Student Code of Conduct in Erie's Public Schools policy manual apply.



Consequences?

Any infraction of conduct, attitude, or responsibility may result in one or more of the following consequences:

- **Laps, push-ups, etc.**
- **conference with student**
- **conference with parent**
- **loss of performance status**
- **conference with appropriate administrator**
- **dismissal from the band program**
- **any consequences per district policy**
- **Sidelined or strip of leader title**



Band Relations

Internet: There are many social networking resources on the internet where marching band is discussed. As a member of the Erie High School Marching Band, it is your duty to uphold our good name in your communication online. Any unfair or poor representation of the Erie High School Marching Band on any internet website will be removed, and the author of that content will be reprimanded via disciplinary action via Erie's Public Schools or by law enforcement. This includes poor treatment of staff, parents, volunteers, students; poor displays in band attire whether at a band function or not.

Band Functions: At competitions, district festivals, and other band functions, the good name of Erie High is in your hands. As a member of the band, you are expected to be respectful of other organizations and their respective members, regardless of any comments made to you. Remember the phrase, "You have a very nice marching band."



Bullying

Cyber bullying

Cyberbullying includes sending, posting, or sharing negative, harmful, false, or mean content about someone else. It can include sharing personal or private information about someone else causing embarrassment or humiliation. Some cyberbullying crosses the line into unlawful or criminal behavior.

In person

Bullying is an ongoing and deliberate misuse of power in relationships through repeated verbal, physical and/or social behaviour that intends to cause physical, social and/or psychological harm. It can involve an individual or a group misusing their power, or perceived power, over one or more persons who feel unable to stop it from happening.

What counts as bullying?



Different types of bullying

Social bullying

Excluding,
Defaming



Physical bullying

Physical
Actions



Verbal bullying

Verbal abuse,
Insulting words



Cyber bullying

Internet,
Technology
devices



Sexual bullying

Appearance,
Attractiveness

Bullying is offensive behavior of someone who has an intention of hurting or intimidating someone else.

Prejudicial bullying

Inclination to
religion/race/gender



Steps to deal with bullying



Report the case of
bullying immediately



Communicate and
warn the bully



Take support of
friends and family

Uniform Care

All uniform pieces will be assigned to a student (Number code), student is responsible for their uniform pieces

NO ONE IS PERMITTED TO EAT OR DRINK ANYTHING EXCEPT WATER WHILE WEARING THE UNIFORM.

Students are responsible for keeping their uniform in presentable condition at all times. This includes hanging the uniform properly after each performance; this will maintain its form and will reduce the need for ironing.

Visible jewelry is not permitted to be worn while in uniform unless it is a part of the uniform. i.e. piercings, necklaces, bracelets, etc.

Students are required to have marching shoes. Shoes are ordered annually by our booster organization. *Each student is responsible for this purchase.*

The band will supply your child with one pair of gloves. Additional pairs will be at the cost of the student.

Under the uniforms, students will be required to wear the official EHSMB show shirt, or a black shirt w/sleeves (no tank tops), shorts and clean black socks.

Uniforms will be collected and inspected each year. Students are financially responsible for all uniform pieces that are lost or damaged. Uniforms will be passed out clean and returned clean each year.

Band boosters will provide dry cleaning at the end of the season for uniforms.

T-Shirts (Summer uniform): t-shirts and shorts will be provided once by the band, if you need a replacement at any point there will be a financial charge. All shirts and shorts will be treated like pieces of the uniform, turned in after each performance to be washed by the band, returned during preparation of performance.



Medical



We understand the need for medication.

- Over the counter medications such as ibuprofen and advil are prohibited being brought to events by students, we have them.
- Prescription medications need to be checked in by a staff member every event! including inhalers. District policy applies. All containers need to be from the pharmacy and prescribed to the student, not a family member. A note must be written once per season with directions and permission from guardians for medication to be at practice.
- During a performance, emergency medication such as inhalers, need to be given to a staff member or paid booster (not volunteer or student)



Medical



- Accidents happen. If a student gets injured they will be allowed to rest and it is their responsibility to contact their guardians. Any necessary emergency room trips, the contacts will be notified ASAP, and a staff member will go along (If a staff member can not leave the band, a booster with clearances on file will go)
- A student will need a written doctor's note to document any issues that requires them to sit out at any point during practice, if one has not been provided before the 3rd request to sit out, the student will be looked at as skipping rehearsal, attendance policy then applies
- If at any point a student needs medical or mental health attention, the closest adult with clearances will assist, as other adults become available the rankings go like this: Direct staff (Section staff first), paid boosters, volunteers. NO Parents should take over care for a student unless they are paid booster or the guardian of said student. If a staff member or booster becomes available, the lower ranks need to step back and hand over care.



Adult Roles



Any direct involvement with students, you require documented clearances

Staff

- oversee instruction, goals, and supervision of their assigned section/speciality
- develop and implement website, social, and clerical media
- responsibilities are delegated according to individual strengths, availability, and access
- collaborate with director, staff, and members to meet instructional and program goals

Boosters (Band mommas)

- Paid membership
- assigned to a specific task such as chaperoning, uniform fitting, equipment needs, booster needs (Including clerical), and instructional as seen fit by directors
- individuals attend events as needed

fundraising and 'behind the scene' specialist to insure goals and needs are met

Volunteer

- assigned to a specific task such as chaperoning, uniform fitting, equipment needs, booster needs (Including clerical), and instructional as seen fit by directors
- individuals attend events as needed as seen fit by all staff and paid booster members
- Collaborate with directors, staff, and members to meet instructional and program goals



Student Roles



- Held to a much higher standards. Must be role models for all
- Do not abuse/ overstep your position, may be removed. Staff need time to give appropriate instruction on the bands level
- Drum Majors, sections leaders, and leaders-in-training (LITs) serves as liaisons between staff and students
- responsibilities are set by the directors and specific section instructors based on needs and strengths of individual students
- collaborate with directors, staff, and members to meet instructional and program goals

Drum Major/ Section Leader Responsibilities

Drum Majors-Requirement to spend one day at EUP Spirit of the Scots Marching Band rehearsal to shadow the drum major. *Goals would be improving leadership skills, conducting, and communicating with all members in the band and adults.*

Students in any leadership position who plan to miss rehearsals regularly due to conflicts in other organizations/workplaces must have a written formal request that is approved by staff.

**Example: Missing every Tuesday for work. Missing the 1st Thursday of every month for Pottery Club.*

THESE WILL NOT COUNT AS UNEXCUSED IF APPROVED BY STAFF.

Any more than 5 unexcused absences will lead to the student being stripped of their title.

Students in leadership positions must meet with their staff-mentor once a month for a 20 minute meeting. In this meeting, any improvements, recommendations, or resolutions to conflicts that need to be made shall be brought up.

Can I Become a Drum Major/ Section Leader?

To hold a leadership position, the staff recommends 1 year of active participation of the marching band.

During the students previous year, they must have attendance that reflects the attendance policy (Only 5 unexcused absences).

Students wishing to hold a leadership position must show behaviors that meet the standards of a leadership position, including:

Responsible

Organized

Knowledgeable

Timely

Participative

Positive

Effective Communication

Inclusive

Leadership Auditions



To apply for a leadership position, there will be paperwork, an interview, and an audition, including:

Students will complete 30-60 seconds of conducting at 60, 120, and one other BPM.

Leadership Exhibition (Conducting/Lead Section/Etc.): perform as a Leader/DM.

Perform Commands: Attention, Parade Rest, Horns-up/down, Mark Time,

etc.

Students will complete an interview with staff.

Students will write a formal essay answering the questions chosen by staff.

Essay, in your own written words:

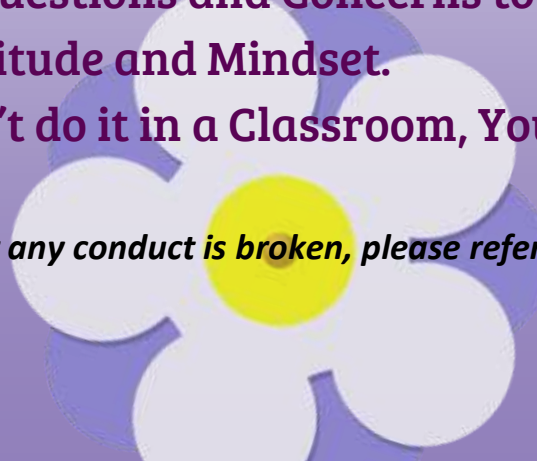
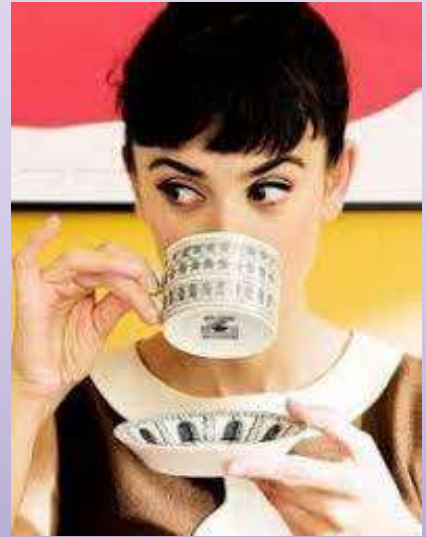
Who makes a good Leader/Drum Major?

(typed, double spaced - minimum of 1 page in length, but not more than 2 pages)

Expected Etiquette

1. Be on Time.
2. Be Respectful to Everyone.
3. Come Prepared.
4. Put Down ALL Electronic Devices.
 - a. This includes cell phones, earbuds, headphones, smartwatches, ect.
5. Know When to Bring Questions and Concerns to Staff.
6. Be Mindful of Your Attitude and Mindset.
7. If You Can't or Wouldn't do it in a Classroom, You Shouldn't do it in Marching Band.

If any problems arise, or any conduct is broken, please refer to consequences on page 5



Mr. Nicklas' Favorite Tradition... The Quote

“Watch your thoughts, for they become words.
Watch your words, for they become actions.
Watch your actions, for they become habits.
Watch your habits, for they become character.
Watch your character, for it becomes your destiny.”

- Margaret Thatcher



What's the show?



Incantation

T-shirt designs are due the 11th
Voted upon the 13th